

Brake Roller



euroroll.....



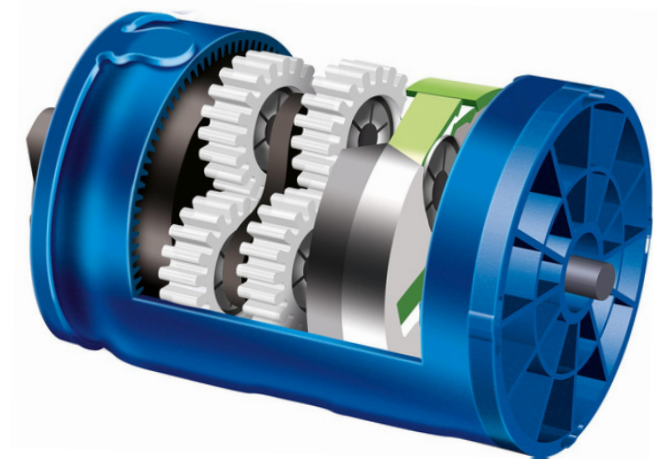
Brake Roller EBT2S for greater warehouse safety

Safety has top priority in the warehouse. The Euroroll brake roller controls the speed of conveyed goods on the roller conveyor. The reaction time and engagement speed of the gearing are much shorter than those of conventional brake rollers.

The EBT2S brake roller is designed for loads of up to 1400 kg. The installation length (EL) is variable. We offer customized from 124mm up to 1500mm. The tube length (RL) is individually adapted to the installation length. Both the zinc plated steel and the planetary gearing are highly durable.

Leveraging 40 years of refinement, our EBT2S offers an unmatched balance of robustness and cost-effectiveness, setting us apart from competitors and ensuring unrivaled reliability.

Euroroll utilizes advanced materials such as high heat-resistant polymers from Bayer for brake pads, and corrosion-resistant zinc-plated steel tubes. Combined with the latest injection molding technology, Euroroll ensures superior quality, performance, and durability.



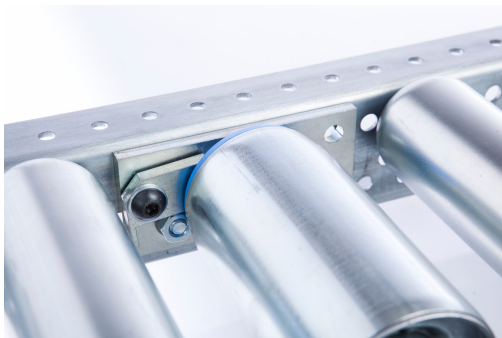
-  Robust & Refined Design
-  High Load and Throughput Capacity
-  Exceptional Performance under Stress
-  Advanced Materials and Manufacturing Techniques



Features and Advantages

Euroroll brake rollers are the result of over 40 years of engineering experience of our company. The brake roller is continuously improved and universally applicable.

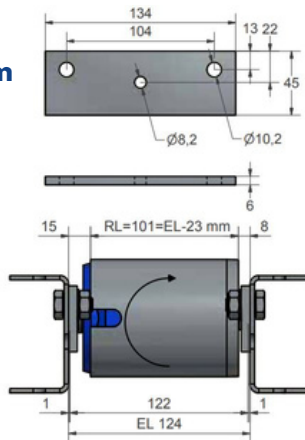
Features	Advantages & Benefits
Brake design refined over 40 years	Robust and cost-effective. Reliable, long-lasting, cost savings
Latest injection molding technology	Precision manufacturing. Superior quality, performance & durability
Steel tube with zinc plating	Corrosion resistant. Longer life, less maintenance
240kg load bearing	High load capacity. Can handle heavy loads with ease
High impact resistant steel bearing	Durable and sturdy. Decreased maintenance and repair costs
Up to 60 pallets/hour throughput	High capacity. Increases productivity and efficiency
Up to 1400kg pallet load	Robust, suitable for almost all types of heavy load carriers
Min. EL=124mm	Compact design. Allows for more flexible system design
Metric M10 screw	Common size, easily replaceable. Simplifies maintenance and repairs



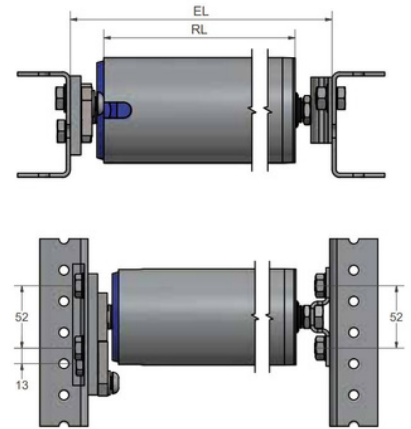


Technical Data

Brake Roller EL = 124mm, 133mm



Brake Roller EL = 182 -1500mm



Versions &

Variants

Version / Type	EBT2S - 124	EBT2S - 133	EBT2S-X (X = EL)
Allowed pallet weight	80 – 1400 kg	80 – 1400 kg	80 – 1400 kg
Effective length (EL)	124mm	133 mm	182 - 1500 mm
Holder	Flat	Flat	Rigid
Variants			
Deep freeze	-TK	-TK	-TK
Knurled	-R	-R	-R
Rubber coated	-G	-G	-G



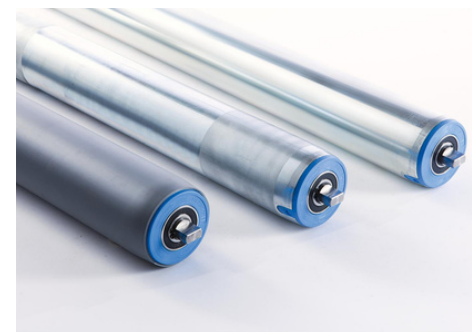
Planetary gear

- Two-step design
- Sprocket diameter of 28mm
- 8 large sprockets
- Pallet entry speed of 0.35m/s
- Withstand stress and torque
- Fast response time



Bearing

- Front bearing type: 6204
- Static load capacity: 6.6 kN
- Axle slot made of milled material
- Robust and sturdy
- Can sustain high loads



Variants

- Brake for deep freezing storage up to -38° C
- Knurled brake roller for e.g. plastic pallets
- Rubberized brake roller for steel pallets



Application Fields

Logistics and Warehousing

In any situation where goods need to be moved quickly and efficiently, EBT2S brake rollers could provide an advantage.

Automotive Industry

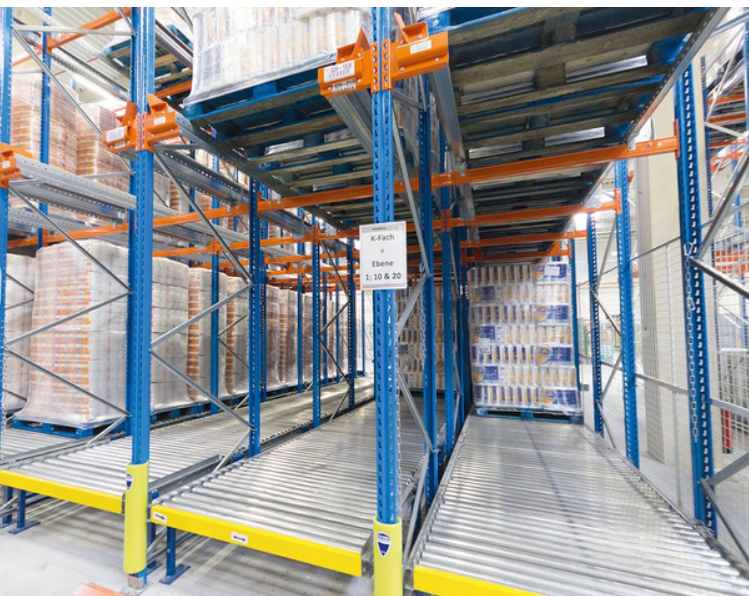
The robustness of Euroroll brake rollers can handle the heavy-duty demands of automotive manufacturing, assembly lines, and distribution.

E-Commerce Fulfillment Centers

With high pallet throughput, these rollers are well-suited to the fast-paced, high-volume environment of e-commerce warehouses.

Food and Beverage Industry

Due to their ability to handle high pallet throughput, EBT2S is suitable for the food and beverage industry, which often requires high-speed operations for storage and transportation of goods.



Parcel and Postal Services

In mail sorting facilities and parcel distribution centers, the high-load capacity and efficiency of Euroroll EBT2S can improve operational efficiency.

Breweries and Wineries

From production to packaging, Euroroll brake rollers can help to ensure smooth operations.

Paper and Printing Industry

These industries require efficient material handling systems for large, heavy rolls of paper where Euroroll brake rollers can provide reliable solutions.



Application Fields



Retail and Supermarkets

Euroroll brake rollers can be used in the retail sector and supermarkets where there's a need for high load capacity and throughput.

Manufacturing Industry

Our brake rollers can be effectively used in manufacturing units where heavy items are frequently transported across the facility.

Cold Storage

The high-quality materials used in Euroroll brake rollers can withstand extreme temperatures, making them suitable for use in cold storage facilities.

Pharmaceutical & Healthcare Industry

Precision and reliability are key in these industries where Euroroll brake rollers can ensure efficient operations.

Textile Industry

For transporting heavy rolls of fabric or other textile products, our EBT2S brake roller can provide efficient and reliable solutions.

Electronic & Appliance Manufacturing

These industries often require precise and careful handling of products. The brake rollers can provide smooth and reliable transport for these items.

Automated Storage Systems

With their robust construction and high load-bearing capacity, they are an ideal fit for ASRS. These systems often require components that can withstand fast pallet throughputs.

