

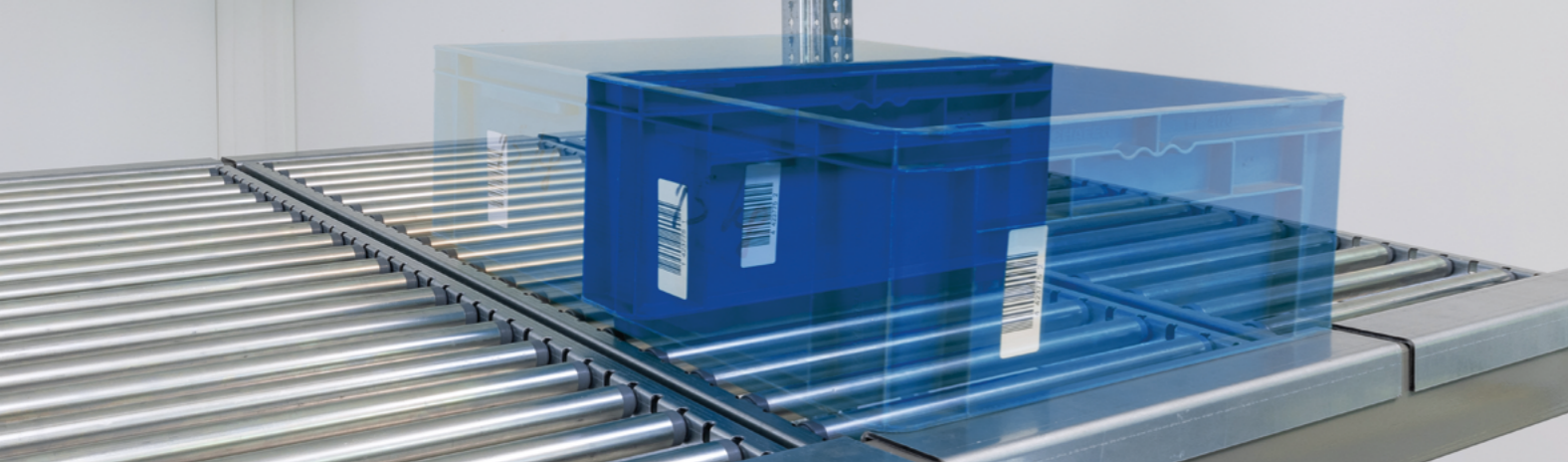
RollerFlow

Dynamic full-width roller style carton flow provides maximum surface contact for applications with consistent carton widths.

• We make things move •
• We make things move •

Euroroll's innovative RollerFlow solution that drops into existing structures to create a robust flow system for any operation.

- Features
- End Styles
- Accessories
- Benefits
- Options
- Brackets



FLEXIBLE STORAGE SPACE LIGHT AND HEAVY LOADS.

Euroroll RollerFlow drops into existing structures and creates flexible storage space for medium heavy loads. Our galvanized, durable steel rollers provide reliable flow for all kinds of kegs, boxes and totes. Maximize your floor space and improve productivity. Secure the fit with custom mounting brackets.

Features

- Steel rollers supports up to 50 psf with unsupported lengths up to 96"
- Rated for cooler & freezer applications
- Tilt shelf options to allow for split-case picking
- Numerous mounting options available to accommodate all beam types
- Flexibility in design – Various configurations
- Entry guides and impact trays available for feed end
- Rollers available with either standard bushings or bearings

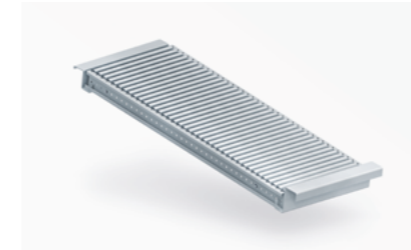
Benefits

- Preassembled and Installs easily to any new or existing pallet rack
- 300% more carton surface contact than traditional wheel rail design
- Ideal solution for even the most active warehouses and manufacturing plants
- Easy installation – No tools required
- Eliminates hang-ups & allows superior lane tracking for full & split case picking
- Ideal for beverage applications
- Reduce travel time for order pickers



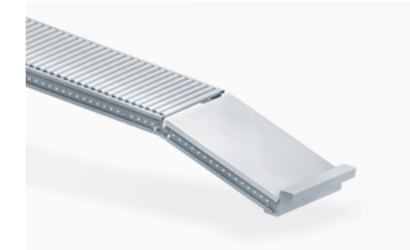
Need help?
Contact us via
sales@euroroll.com

End Styles



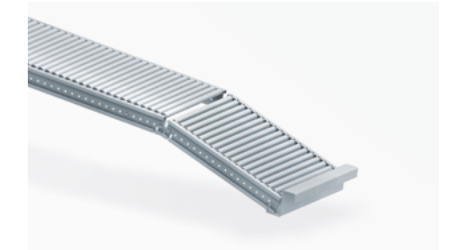
Low Profile

Installs between beams on hangers for maximum use of vertical space. Used for full case or individual picks.



Tilt Tray

Enhance your picking efficiency with ergonomically positioned tilt trays. Easily adjust your custom-fit trays to any angle for improved visibility and accessibility.



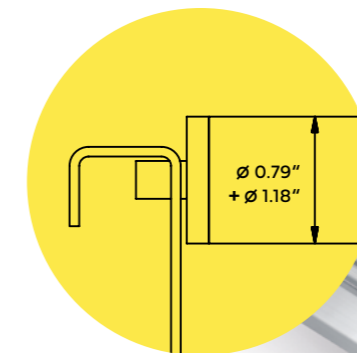
Profile Knuckle

Available in custom lengths and provided with tilt angles for improved speed, accuracy and ergonomics.

Flow Options

RollerFlow Bed Width

Euroroll RollerFlow Systems are available in customized widths allowing for the best track combination that fits within the width of the rack bay. Custom widths and roller centers available for special applications.

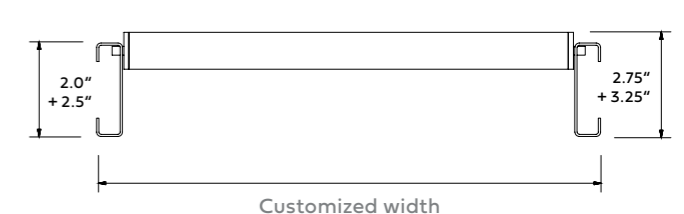


Technical Information

Ø 0.79"



Ø 1.18"



ACCESSORIES & OPTIONS

Contact our Sales:
sales@euroroll.com

Accessories

Custom-designed carton flow solutions often include accessory products to enhance the performance and longevity of your system. Mix and match accessories as needed to tailor your solution.



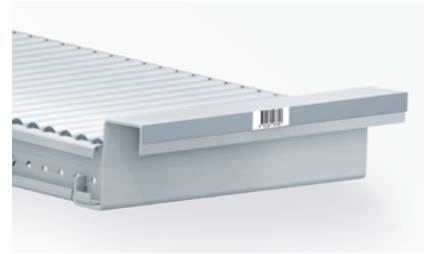
Impact Tray

Custom fit steel trays take the abuse from repeatedly loading heavy cartons and totes while protecting your wheels or rollers.



Full Length Guides

Low profile clip-in guides allows for lane separation and quick reprofiling of lanes.

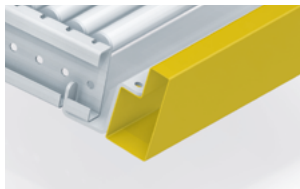


Label Holders

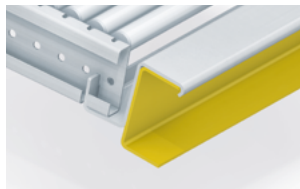
Self-adhesive backed extruded plastic label holder to offer organization and efficiency.

Brackets

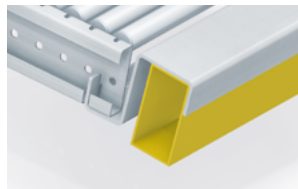
We offer all types of mounting brackets based on beam types and application requirements. Custom Brackets available.



Step Beam



Channel Beam



Box Beam

Catalogues,
data sheets and
flyers



Smart gravity engineering.

euroroll

Euroroll GmbH

Raiffeisenstraße 3
59368 Werne
Germany

www.euroroll.de

Euroroll USA LLC

1105 W Peachtree Street NE5
Suite 1000, Atlanta GA
USA

www.euroroll.com