

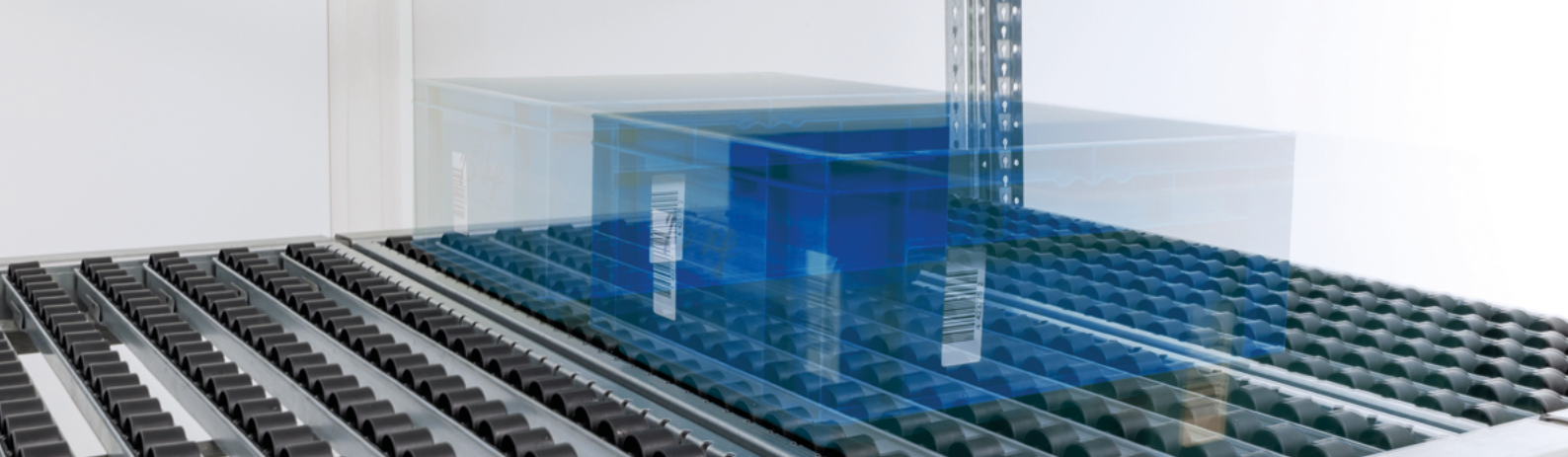
# TrackFlow

## Dynamic wheel track design for maximum flexibility at an economical cost.

Euroroll's innovative TrackFlow solution drops into new or existing rack structures to create a reliable flow system for a variety of operations

- Features
- End Styles
- Accessories
- Benefits
- Options
- Brackets





# DESIGNED FOR EASY ATTACHMENT TO BEAMS.

Euroroll's exclusive Carton Flow Solution. Our roller tracks are designed for easy attachment to beams. You can customize them to your specific needs, whether it's in terms of length, width, or the number and color of roller tracks.

## Features

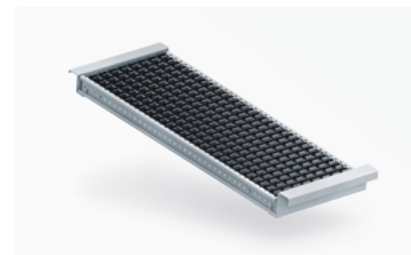
- Rated for cooler & freezer applications
- Tilt shelf options to allow for split-case picking
- Numerous mounting options available to accommodate all beam types
- Maximum flexibility left-to-right for easy re-slotting
- Full length guides and impact trays available
- Anti-static option available
- Poly wheels available in several colors

## Benefits

- Economical case flow solution for applications with various size cartons
- Preassembled and installed easily to any new or existing pallet rack
- No shelves or intermediate supports required
- Maximum space utilization with flexibility of track spacing
- Ideal solution for even the most active warehouses and assembly plants
- Reduce travel time for order pickers

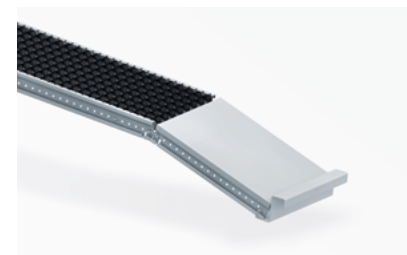


## End Styles



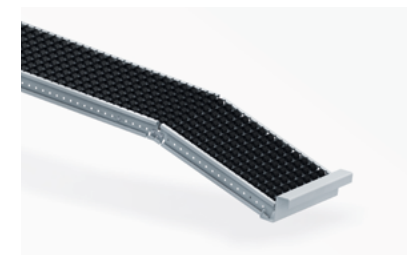
### Low Profile

Installs between beams on hangers for maximum use of vertical space. Used for full case or individual picks.



### Tilt Tray

Enhance your picking efficiency with ergonomically positioned tilt trays. Easily adjust your custom-fit trays to any angle for improved visibility and accessibility.



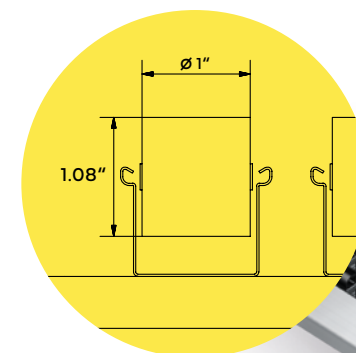
### Profile Knuckle

Available in custom lengths and provided with tilt angles for improved speed, accuracy and ergonomics.

## Flow Options

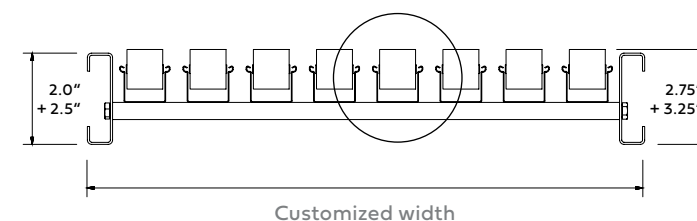
### TrackFlow Track Bed Width

Euroroll TrackFlow Systems are available in customized widths allowing for the best track combination that fits within the width of the rack bay. Custom widths and track spacing available for any application.



### Technical Information

#### Custom TrackFlow



# ACCESSORIES & OPTIONS

Contact our Sales:  
[sales@euroroll.com](mailto:sales@euroroll.com)

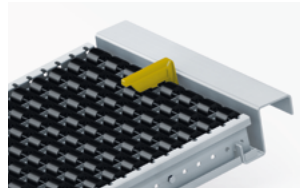
## Accessories

Custom-designed carton flow solutions often include accessory products to enhance the performance and longevity of your system. Mix and match accessories as needed to tailor your solution.



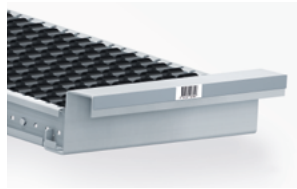
### Impact Tray

Custom fit steel trays take the abuse from repeatedly loading heavy cartons and totes while protecting your wheels or rollers.



### Entry Guide

The slim entry guide offers swift SKU segmentation and reprofiling to prevent displacement when loading.



### Label Holders

Self-adhesive backed extruded plastic label holder to offer organization and efficiency.

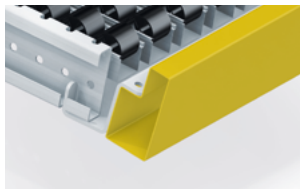


### Full Length Guides

Low profile clip-in guides allows for lane separation and quick reprofiling of lanes.

## Brackets

We offer all types of mounting brackets based on beam types and application requirements. Custom Brackets available.



### Step Beam



### Channel Beam



### Box Beam

Catalogues,  
data sheets and  
flyers



Smart gravity engineering.

# euroroll

### Euroroll GmbH

Raiffeisenstraße 3  
59368 Werne  
Germany

[www.euroroll.de](http://www.euroroll.de)

### Euroroll USA LLC

1105 W Peachtree Street NE5  
Suite 1000, Atlanta GA  
USA

[www.euroroll.com](http://www.euroroll.com)