

WheelFlow

Dynamic full-width wheel bed design
for maximum flexibility & optimal flow.

We make things move. We make things move. We make things move.

Euroroll's innovative WheelFlow solution that drops into existing structures to create a robust flow system for any operation.

- Features
- End Styles
- Accessories
- Benefits
- Options
- Brackets



MAXIMIZE PRODUCTIVITY AND SPACE.

WheelFlow is Euroroll's innovative carton flow solution that drops into existing structures to create a robust flow system for any operation. Our Systems are engineered-to-order to create the ultimate order picking environment.

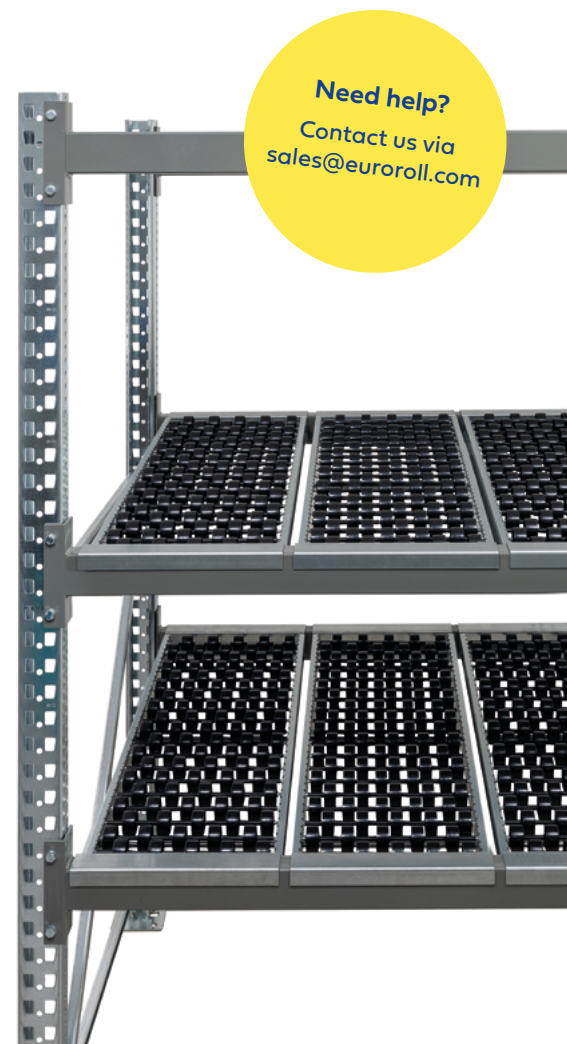
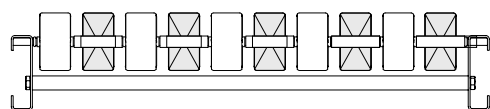
Features

- Wheel bed supports up to 50 psf with unsupported lengths up to 96"
- Rated for cooler & freezer applications
- Tilt shelf options to allow for split-case picking
- Numerous mounting options available to accommodate all beam types
- Maximum flexibility left-to-right for easy reslotting
- Entry guides and impact trays available for feed end
- Hex hub wheel design for optimal flow

Benefits

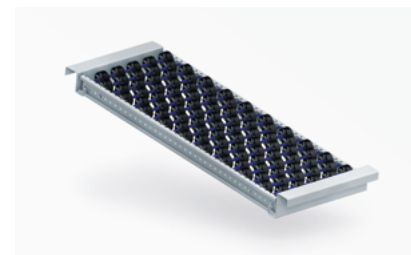
- Preassembled and Installs easily to any new or existing pallet rack
- No shelves or intermediate supports required
- Maximum space utilization with flexibility for any carton size
- Ideal solution for even the most active warehouses and assembly plants
- Eliminates hang-ups & allows superior lane tracking
- Reduce travel time for order pickers

1.6" Hex Hub (W)
Low friction wheel bed design



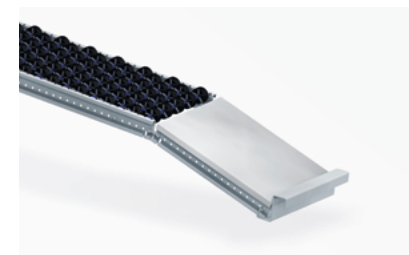
Need help?
Contact us via
sales@euroroll.com

End Styles



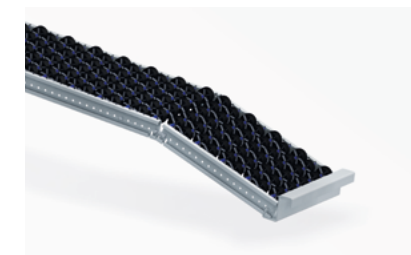
Low Profile

Installs between beams on hangers for maximum use of vertical space. Used for full case or individual picks.



Tilt Tray

Enhance your picking efficiency with ergonomically positioned tilt trays. Easily adjust your custom-fit trays to any angle for improved visibility and accessibility.



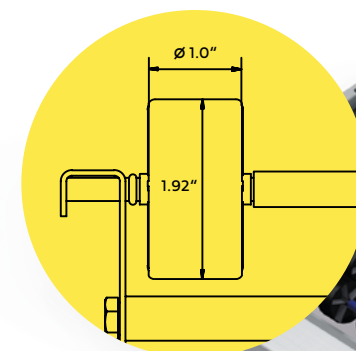
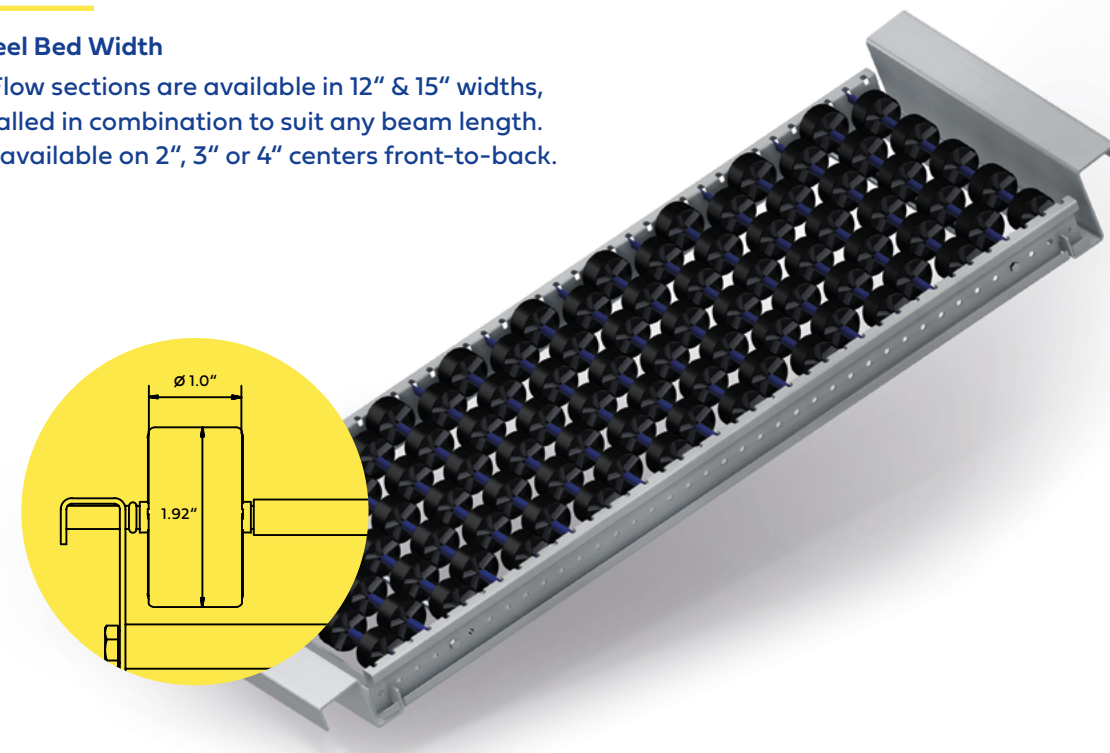
Profile Knuckle

Available in custom lengths and provided with tilt angles for improved speed, accuracy and ergonomics.

Flow Options

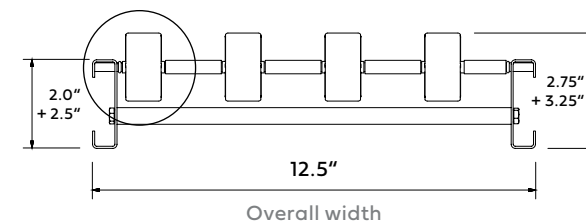
WheelFlow Wheel Bed Width

Euroroll WheelFlow sections are available in 12" & 15" widths, and can be installed in combination to suit any beam length. Wheel rods are available on 2", 3" or 4" centers front-to-back.

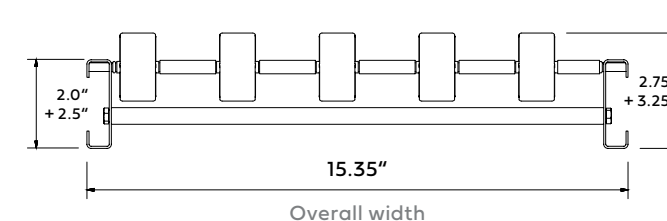


Technical Information

12" WheelFlow



15" WheelFlow

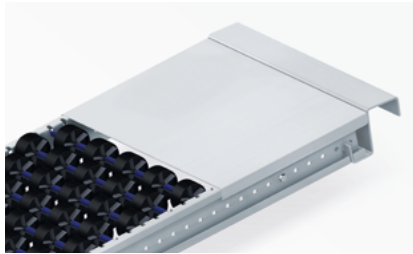


ACCESSORIES & OPTIONS

Contact our Sales:
sales@euroroll.com

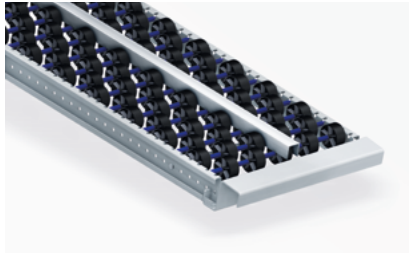
Accessories

Custom-designed carton flow solutions often include accessory products to enhance the performance and longevity of your system. Mix and match accessories as needed to tailor your solution.



Impact Tray

Custom fit steel trays take the abuse from repeatedly loading heavy cartons and totes while protecting your wheels or rollers.



Full Length Guides

Low profile clip-in guides allows for lane separation and quick reprofiling of lanes.

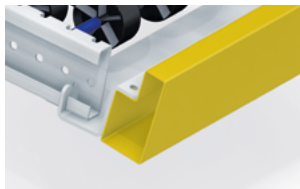


Label Holders

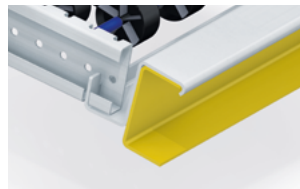
Self-adhesive backed extruded plastic label holder to offer organization and efficiency.

Brackets

We offer all types of mounting brackets based on beam types and application requirements. Custom brackets available.



Step Beam



Channel Beam



Box Beam

Catalogues,
data sheets and
flyers



Smart gravity engineering.

euroroll

Euroroll GmbH

Raiffeisenstraße 3
59368 Werne
Germany

www.euroroll.de

Euroroll USA LLC

1105 W Peachtree Street NE5
Suite 1000, Atlanta GA
USA

www.euroroll.com