



# Push Back Cart System

Cart Solution for heavy loads in LIFO operation

We make things move • We make things move • We make things move

Faster Installation, Lower Profile, Durable Design

- Made of structural steel
- Up to 5 pallets deep (standard)
- For all pallet types
- Faster installation
- Retrofit possible
- Preassembled



**Need help?**  
Contact us via  
[sales@euroroll.com](mailto:sales@euroroll.com)

# EASY CROSSWAY STORAGE OF PALLETS IN LIFO CONFIGURATION

The Push Back Cart System is a gravity-driven solution designed for pallet storage, with a depth of two to five pallets. The Euroroll Cart Push-Back system features easy-gliding carts secured on sturdy rails, reducing maintenance. Its low construction maximizes product storage and vertical space between beams.

## Advantages

- ✓ Accommodates all pallet sizes
- ✓ Compatible with most rack systems
- ✓ -30 to +50 degrees Celsius
- ✓ For up to 1,500 kg per pallet
- ✓ Standard from 2-5 pallets deep
- ✓ Time & Labor savings
- ✓ Sustainable, energy savings
- ✓ Premium quality powder coating

## Loading and Unloading

The first pallet is placed on the top cart. The second pallet pushes the first pallet back and is placed on the second cart and so on. The last pallet is placed on the rails. Unloading is done in reverse order.

# ROLLING IN 2 CART VARIATIONS



## Low Profile

- Heavy duty
- slope can vary from 2.5% to 4%
- Nested carts to optimize space per level



## Ladder Style

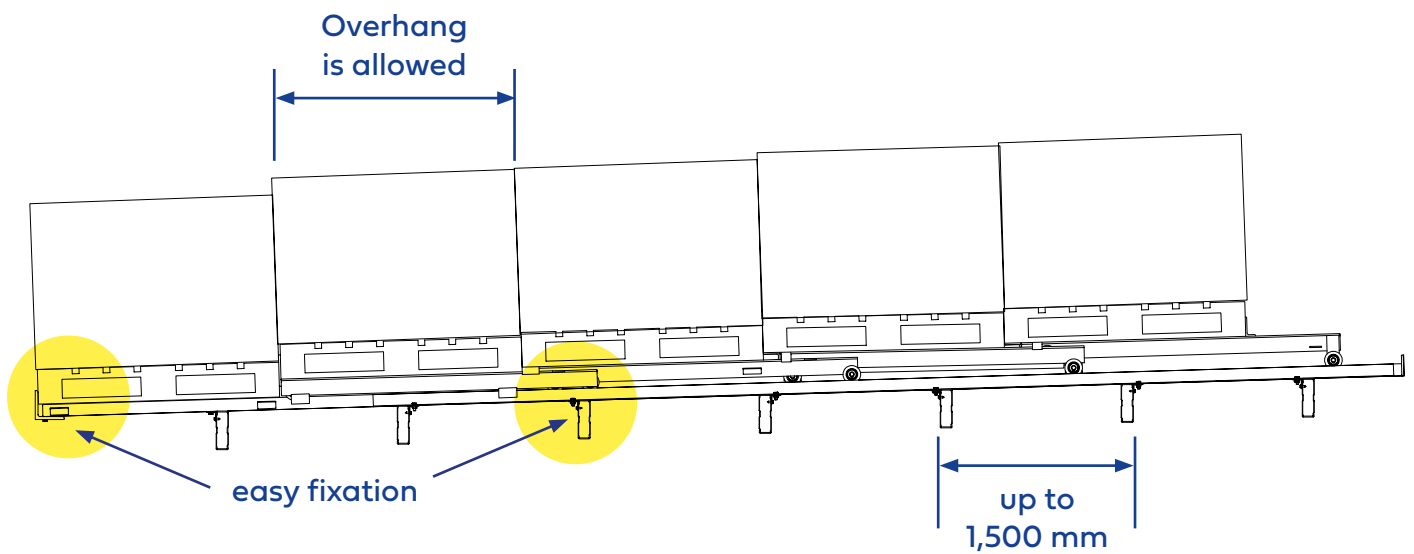
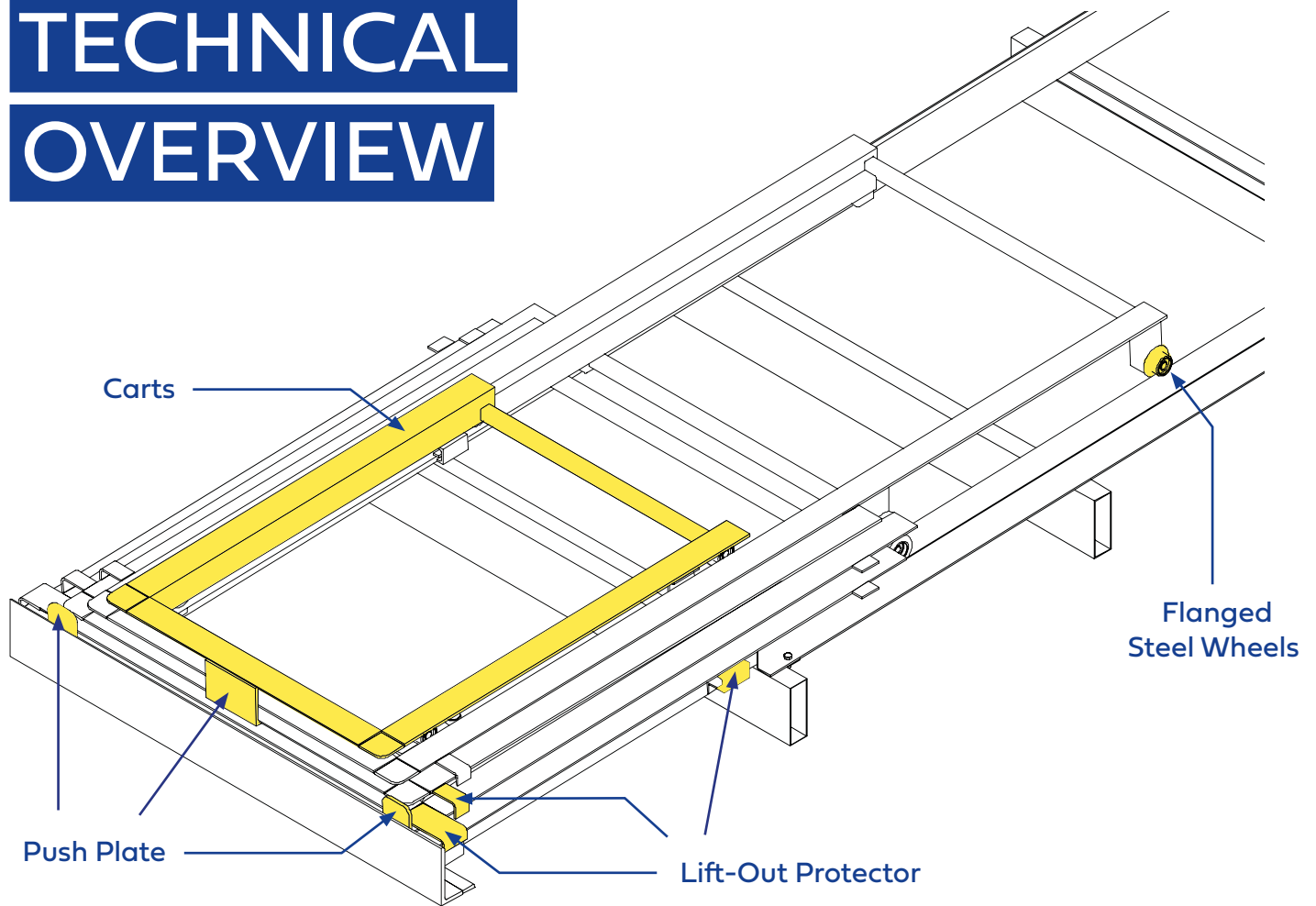
- Heavy duty
- slope can vary from 2.5% to 4%
- Each cart is equipped with cross braces to form a stable platform for pallets of varying shape and quality



Download  
this Flyer  
and more



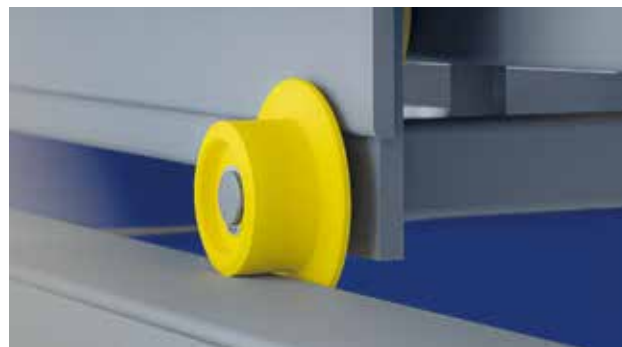
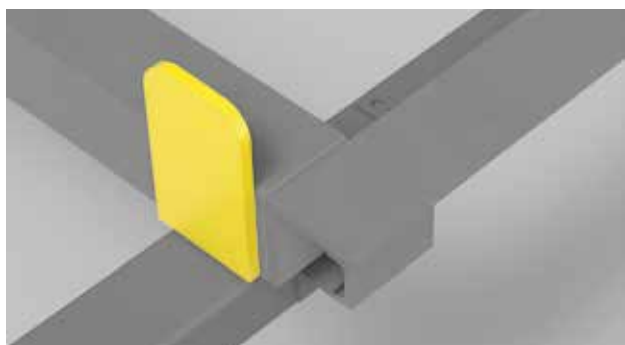
# TECHNICAL OVERVIEW





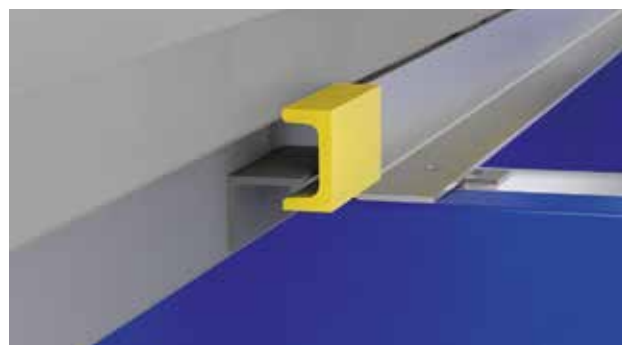
## Carts

The Euroroll carts are made of structural steel and are welded together to form a sturdy platform for pallets to sit on. This ensures a long lifetime even in rough daily operation. The carts are powder coated in grey. Other colors or zinc plating are available on request.



## Flanged Wheels

The steel flanged wheels are equipped with sealed precision bearings for operation in all possible moist/dusty areas. These wheels guide the carts precisely along the rails and ensure optimal functionality, also in deep freezers.



## Push Plate

The push plate on the lowest cart acts as a height gauge and ensures the correct positioning of the pallet. The second function is to act as strip-off plate in case the forks are not completely in line with the pallet. The push plate is also a lane-full indicator. As soon as this plate is not visible anymore, the lane is full.

## Lift-Out Protector

The lift out protectors prevent dislodging of the carts while loading and unloading pallets.

Amount of Pallets	2	3	4	5
Direction of transport	crossway transport			
Min. System Depth	(depth of pallets + 50mm) x amount of pallets when 5 pallets deep: + 200mm			
System Height Low Profile (in mm)	126	145	164	183
System Height Ladder Style (in mm)	124	224	287	350

The data in this table is valid for pallet types: Euro style or similar, Industrial, Chep, GMA style or similar

# EASY TO INSTALL IN 4 STEPS

Contact our Sales:  
[sales@euroroll.de](mailto:sales@euroroll.de)



Racking Assembly



Mounting of Rails



Placing of preassembled carts



Check for function, Ready for use

## euroroll.....

Euroroll GmbH

Raiffeisenstrasse 3  
59368 Werne  
Germany

[sales@euroroll.de](mailto:sales@euroroll.de)

[www.euroroll.de](http://www.euroroll.de)

Euroroll USA LLC

1105 W Peachtree Street NE  
Suite 1000, Atlanta GA  
USA

[sales@euroroll.com](mailto:sales@euroroll.com)

[www.euroroll.com](http://www.euroroll.com)

Smart gravity engineering.



follow us:

